

## SAFETY NOTES

1. The lamp should be installed when power supply is off. Any maintenance operation or modification of settings requires switching the power supply off.
2. Carrying out any work when the power is on may cause electric shock; if in doubt, please contact a qualified electrician.
3. Safety rules and construction and electrical installation standards should be followed all the time.
4. Before installation one need to make sure that the luminaire will be connected to 220-240VAC power supply by the use of minimum a 1,5mm<sup>2</sup> wire.
5. The luminaire should not be powered with circuits connected to inductive devices at the same time. This may cause damage to the electronic module of the luminaire.
6. The luminaire should be used indoors or under roofing.

## GUARANTEE

Intelight Sp. z o.o. provides free removal of faults resulting from defects in material and workmanship by repairing or replacement of the device, for a period of two years from the date of purchase. In case of malfunction, please deliver the product to the place of purchase along with a warranty tag. The guarantee shall not cover wearing parts as well as defects resulting from improper installation or operation of the device, in particular mechanical damage, arbitrary modification or malfunction caused by temperature or chemical agents. Please note also that the costs of unjustified complaint shall be charged to the customer. For complete guarantee details please visit our website at: [www.intelight.pl](http://www.intelight.pl). Intelight Sp. z o.o. reserves the right to change the design of the product.

### Handling of obsolete equipment



Pursuant to the Act of 29 July 2005 on waste electrical and electronic equipment and the Act of 24 April 2009 on batteries and accumulators, the presented device, after use, due to hazardous substances contained in it, is subject to collection of waste electrical and electronic equipment. Detailed information on WEEE collection can be obtained from municipal authorities.

**intelight**

Intelight Sp. z o.o.  
19, Gwiaździsta str.  
01 -793 Warsaw, Poland

**intelight**

## MILO LED PLAFOND

### Installation and maintenance instructions

#### Versions:

Colour temperatures: 3000K, 4000K, 5000K, 6500K

Switching: STD, MD (ON-OFF), MDD (DIM)

## INTRODUCTION

#### LUMINAIRE'S CONSTRUCTION

The luminaire's housing is made of plastic material (white PC base, milky PC diffuser) and is designed for surface mounting.

The design of the light fitting and the materials used ensure proper mechanical strength as well as resistance to water and dust penetration. The light source is LED panel supplied by an LED driver, all installed inside the housing. A movement detector can be installed optionally.

#### APPLICATIONS

For illumination of plates with numbers on buildings, lighting of staircases, garages, corridors and halls as well as various types of entrances and driveways. External use possible assuming no open air installation (only below roofing).

#### SUPPLY VOLTAGE & POWER

The supply voltage is 230V/50Hz. The lamp has 13W ÷ 15W total power (depending on additional options), LED panel power is 10W.

#### COLOUR TEMPERATURES

The lamp can be manufactured in several colour temperature versions, out of them 3000K and 4000K being a standard.

#### FEATURE OPTIONS

The luminaire can be equipped in following additional options: ON-OFF movement detector (version MD) or DIM-dimmable movement detector (version MDD). More information in INSTALLATION and FEATURE OPTIONS sections.



MILO LED

#### TECHNICAL SPECIFICATIONS:

Light source:	White LED 10W
Colour temperatures*:	3000K, 4000K, 5000K or 6500K
Power supply:	220-240VAC 50Hz
Power consumption*:	13W ÷ 15W
Luminous flux:	min. 1200lm
Energy efficiency class:	C
Movement detector options*:	Standard (no sensor) or MD (ON-OFF detector) or MDD (DIM – dimmable detector)
IP rating:	IP65
Ambient temperatures:	-25°C ÷ 40°C

\*- depending on a version

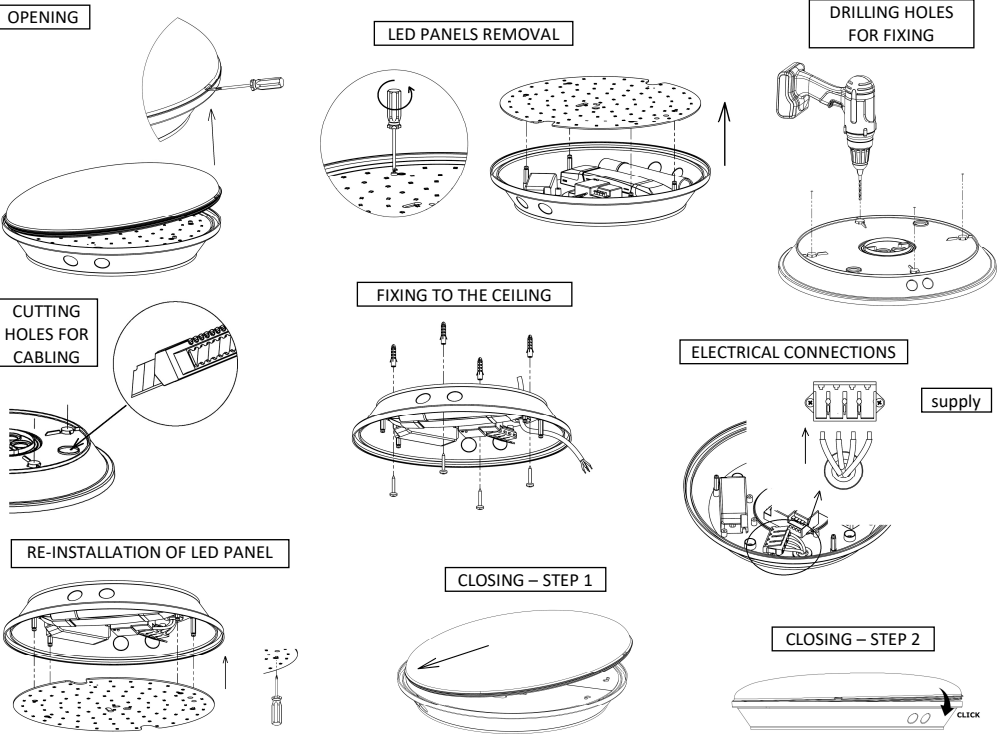
IP65       

## INSTALLATION

1. Installation of the luminaire must be carried when power supply is off.
2. Before installation one has to make sure that the luminaire will be connected to 220-240VAC power supply by the use of minimum a 1,5mm<sup>2</sup> wire.
3. Electrical wires must be connected according to these instructions and imposed regulations.
4. Remove the lamp diffuser by levering it by a flat screwdriver put into a dedicated slot on shade edge.
5. Remove the LED panel by unscrewing four screws, then sliding it back and pulling off the four installation studs and disconnecting its powering connector.
6. Drill four installation holes in the luminaire's base and also four holes (for D4 screws) in a ceiling or a wall, depending on a chosen installation place.
7. Make a cut out in the housing for a power cable using one of available dedicated cut-outs.
8. Next fix a base of the luminaire (containing electronic circuit) to the ceiling (or a wall) through dedicated installation holes using plugs and screws.
9. Guide powering cable to the inside through a chosen cable entry, remembering to mount a grommet or a cable gland in the housing and make a proper hole for cable in it so that the declared IP protection level is retained.
10. Remove part of the insulation from the power cord (1 cm approx.) and connect it to the connector terminal as follows: the phase wire (brown or black) in the hole marked "L", the neutral wire (blue) in the hole marked "N" and – if a fitting has first class of protection – the protective wire (green and yellow) in the hole marked "PE" or ground symbol.
11. Set a movement detector settings (concerns MD and MDD versions).
12. Re-install the LED panel in its place, screw the four screws firmly.
13. Put the diffuser on and snap it in its place.
14. Quick operation testing – switch on the AC supply. For a standard version the luminaire should light up. For versions with a movement detector with factory settings, the luminaire will light up after any movement is detected. The ON-OFF version will

stay lit for 5s then will go off. The DIM version will stay lit for 5s with a full power then will dim to 10% of this nominal power for another 5s before going off. Note: both versions with movement detectors might quickly light up and then go off prior to standard behaviour, it is normal onefold situation just after connecting to a power network.

### INSTALLATION STEPS ILLUSTRATED



## FEATURE OPTIONS

### OPTIONAL MOVEMENT DETECTOR

The luminaire can be delivered as a basic version, with an ON-OFF movement detector or with a DIM (dimmable) movement detector. Movement detectors are pre-programmed with factory settings enabling easy testing of luminaires' operation. If a luminaire is equipped in a movement detector, to finish installation one need to change factory settings for target ones, according to a user's needs.

Factory settings of the ON-OFF detector: Daylight Sensor (light sensor) = 2000lx, Detection Area (sensitivity) = 100%, Hold Time (time delay) = 5s. All possible settings are shown in the below table.

Detector type	ON-OFF						DIM							
	Detection Area		Hold Time		Daylight Sensor		Detection Area		Hold Time		Daylight Sensor		Stand-by Period	
Function	1 & 2		3 & 4 & 5		6 & 7 & 8		1		2 & 3		4 & 5		6 & 7	
Switch(es)	Positions		Settings		Positions		Position		Positions		Positions		Positions	
Switch(es) position(s) and resulting setting	●●	100%	●●●	5s	●●●	2000lx	●	100%	●●	5s	●●	5lx	●●	0s
	●○	75%	●●●	30s	○●●	50lx	○	50%	●○	1min	●○	25lx	●○	1min
	○●	50%	●○○	1min	○●○	20lx			○●	5min	○●	50lx	○●	10min
	○○	20%	○○●	5min	○○●	5lx			○○	10min	○○	disabled	○○	+∞
			○○○	10min	○○○	2lx								
			○○○	20min										
			○○○	30min										

Factory settings of the DIM detector: Daylight Sensor (light sensor) = Disable (i.e. inactive), Detection Area (sensitivity) = 100%, Hold Time (time delay) = 5s, Stand-by Period (time delay for comfort light) = 1min, Stand-by DIM Level (brightness of a comfort light) = 10%. All possible settings are shown in the above table.